

## SMART COVERAGE & ABSOLUTE ECONOMY IN RUNNING COSTS

It's no secret that most common vessel trackers communicate telematic data through Satellite networks, but they leave customers stranded and dissatisfied with regards to high cost position reporting. BlueTraker®2200 closes this gap keeping your vessel covered wherever it might be 24 hours a day 7 days a week and reduces the costs automatically and effectively. It can even track jet skis and small boats through the RFID function built in.

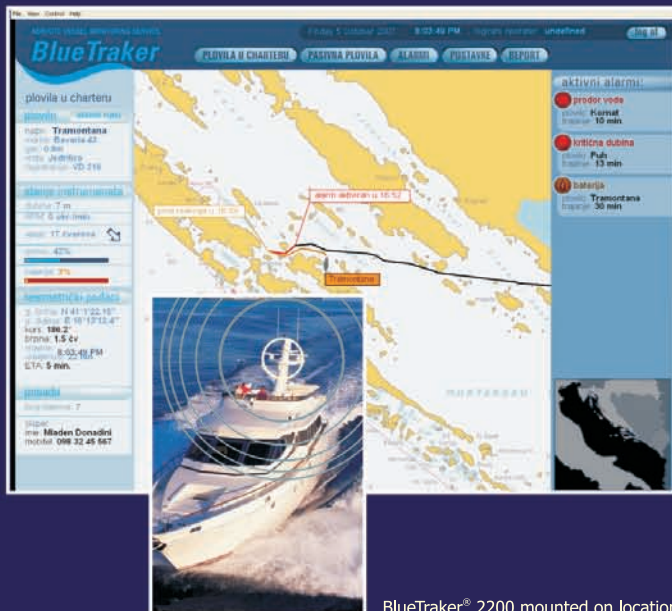
## EXCEPTIONAL OPERATING AUTONOMY

BlueTraker®2200 features a built-in rechargeable Lithium-ion or Lithium-poly chemical source of energy with capacities up to 7200 mAh! When the external power supply switches off or is unavailable for any reason, then the internal battery supply takes over automatically. The power from the internal battery enables BlueTraker®2200 to operate up to 5 days. The battery automatically starts charging up again when the external power supply (vessel batteries, power generators...) is restored.

## ABSOLUTE MODULARITY

A range of modules is available that tailor the BlueTraker®2200 to almost any tracking need imaginable

Tracking Yachts, reporting location and additional data on-line



BlueTraker® 2200 mounted on location

## TECHNICAL SPECIFICATION

### External power supply:

12V ----- or 24V----- nominal / 0,5A

### CPU and memory:

Texas Instruments, 448 KB internal logger memory

### Battery back-up:

Li-Poly 3600 mAh for -25° C to +55° C  
optional 7200 mAh

### Digital inputs:

5 opto isolated digital inputs

### Digital outputs:

2 Relay output 100 V/ 0,8 A/ 30 W

### Integrated Antennas:

GPRS, RFID, Iridium, GPS

### Installation:

External-mast, roll-bar, etc.

### Mounting accessoires:

UniMount, MastMount, TowerMount

### Dimensions (w x h x l):

198 x 67 x 198 mm (7,80 x 2,64 x 7,80 in.)

### Weight incl. batteries:

1100 g (38,83 oz)

### Outer-shell colour:

White

**eiia**  
WIRELESS DATA SOLUTIONS

EMA d.o.o.  
Mariborska 1  
SI – 3000 Celje  
SLOVENIA

[www.bluetraker.com](http://www.bluetraker.com)  
[www.ema.si](http://www.ema.si)

+386(0)3 42 84 800  
sales@ema.si  
[www.ema.si](http://www.ema.si)

EMA reserves the right to make changes without notice to products and or specifications.  
©2007 EMA – Wireless data Solutions All rights reserved.  
All trademarks or registered trademarks are the property of their respective owners.

# BlueTraker® 2200



The Worlds first!  
**Hybrid Transponder**  
for the  
**Remote Monitoring**  
of Motor & Sail Boats at Sea

2 0 0 7  
**DAME**  
DESIGN AWARD METS  
nominee

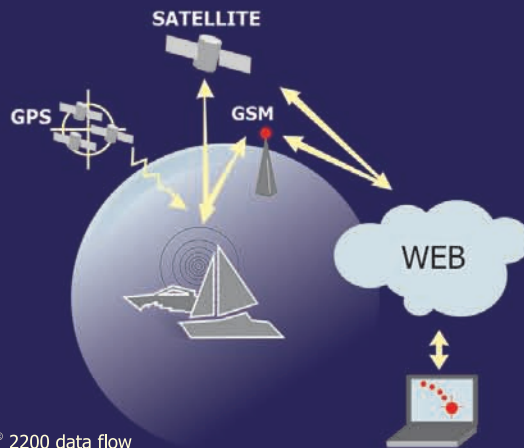
All in one solution!

**eiia**

**BlueTraker® 2200** is the only device for tracking & monitoring charter fleets anytime and anywhere at Sea with low investment and modest air-time running cost

### ABSOLUTELY WIRELESS

Implementing dual communication channels to and from the CFMC (Charter Fleet Monitoring Center). Using satellite communication (Iridium) and terrestrial GPRS/SMS will help keep the costs down. Effective position reporting will have short messaging latency while vessels are in coastal waters and just 1 minute on the High Seas. **"The Real Time Cost Effective Reporting"** is now available on the market.



BlueTraker® 2200 data flow

### ABSOLUTE UPGRADING OVER THE AIR

The low cost and wide bandwidth of GPRS enables us to regularly keep the system updated with new software upgrades. The BlueTraker®2200 is upgraded remotely and wirelessly – without wasting valuable resources and money. This functionality in itself can pay-off the purchase value of the BlueTraker®2200 by reducing the out-of-warranty maintenance costs. The long list of advantages doesn't stop there: Precise geofence detection due to geofence downloads and future functionality downloads are just a few to mention.

### FULLY INTEGRATED DESIGN

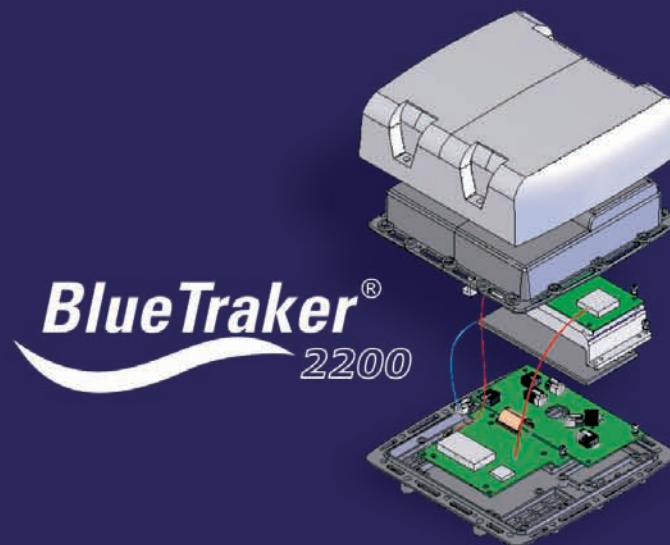
BlueTraker®2200 is mechanically and electrically a fully integrated device with an autonomous power supply and a central processing unit consisting of Satellite and GPRS transceivers and fitted with its very own embedded antennas. Everything is packed inside a very robust housing made of double shell construction. Such a level of integration protects from fraud or misapplication which happens often when "cabling rich" modular devices are installed.

### ABSOLUTE SCALABILITY

A range of low-spec to high-tech devices are now available, fitting anyone's flexible tracking needs. For example you may want to ignore the autonomy but use the standard GSM communication just to keep the cost to a minimum while your vessel is moored, not a problem and then switch back when your needs may require the high specification unit with all the "Absolute" features mentioned. This function is very cost effective during the winter season when your vessel is at a standing during the cold, bitter months and regular messaging latency can become fewer while your peace of mind and security remain at the highest possible level.

### ABSOLUTELY ROBUSTNESS

Your new tracking device mounts externally onto your vessel and resists all weather conditions, mechanical bumps or electrical interference that might occur in years of operation. The BlueTraker®2200 housing consists of a double-shell construction. Both shells are separated by a layer of air which is not sealed to the external environment - Air can freely and slowly circulate between the two shells. Due to its double shell housing structure it can resist even the harshest chill factor when the vessel is moving at high speed through the coldest of all environments. The housing unit is fully waterproof. The construction provides exceptional ingress protection up to a maximum of IP69K protection grade (car wash environment). High UV radiation and temperatures from -25 °C to +55 °C will have no impact on the BlueTraker®2200 operation.



### PEACE OF MIND

#### Mechanical protection

- Double-shell housing
- Shock resistance tested with multiple drops ranging from 1,2 m height to every side of device
- Mechanically coded stainless steel secure screws
- Waterproof and dust protection



Double shell housing - air flow

#### Electrical protection

- Power supply input protected against overvoltage (600V AC/DC) & polarity reversal
- Power line disconnect below 9 V and above 35 V DC
- 8 kV ESD protection

#### Environmental conditions

- Temperature range : -25 °C to +55 °C,
- Humidity: 10 - 100% RH
- Resistant to UV radiation (special polymer)
- Resistant to salt environment

#### Leisure boats accessories

- RFID transponder with covert installation up to 10m from BlueTraker®

#### Regulations and standards compliance

- CE certified for installation on marine vessels
- IP 68 to EN 60529 and IP 69K
- Vibration to EN 60945

CE 1304

